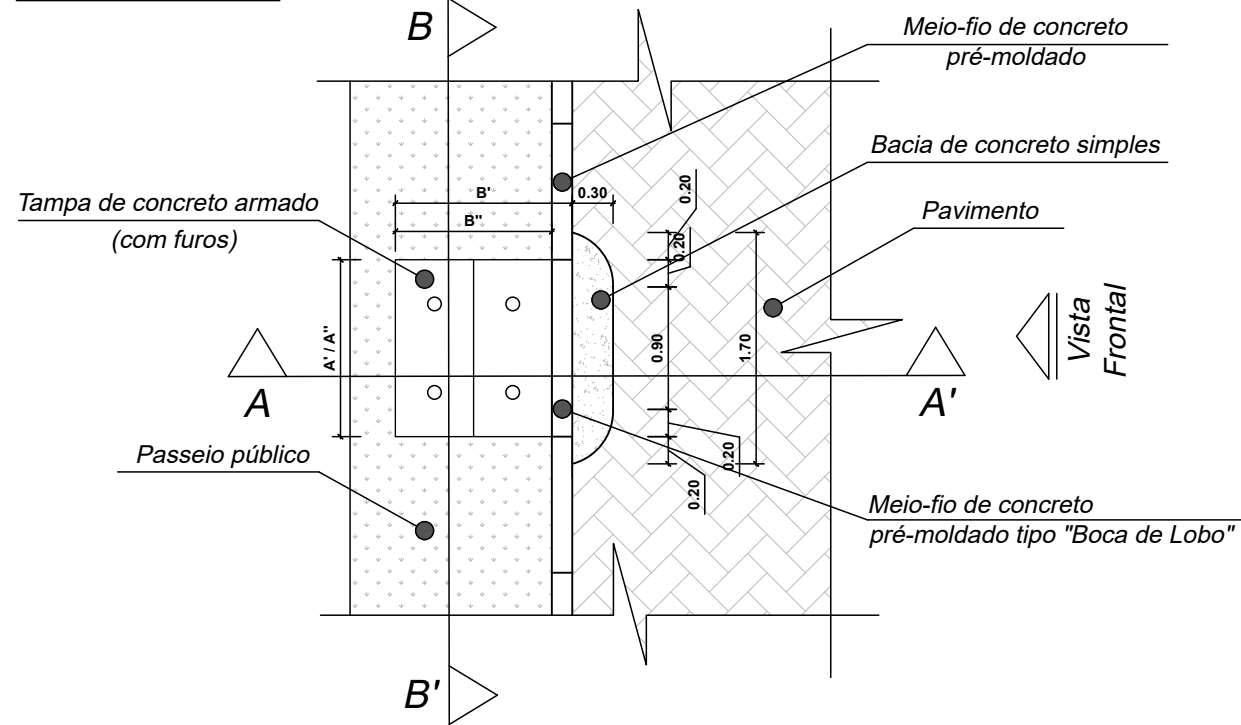


01 DETALHES

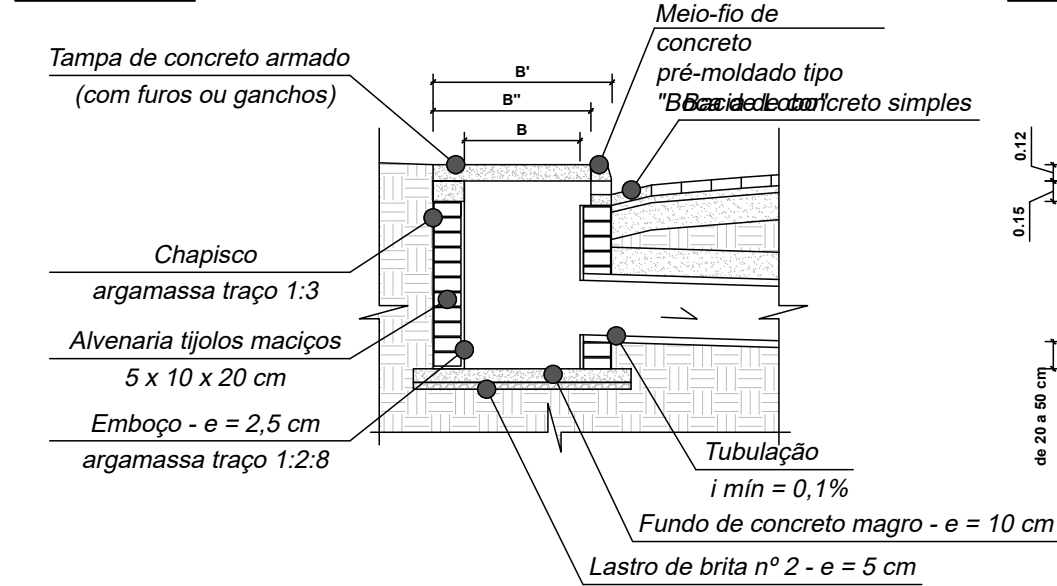
Sem Escala

DETALHAMENTO CAIXA COM MEIO-FIO BOCA DE LOBO:
ALVENARIA DE TIJOLOS MACIÇOS

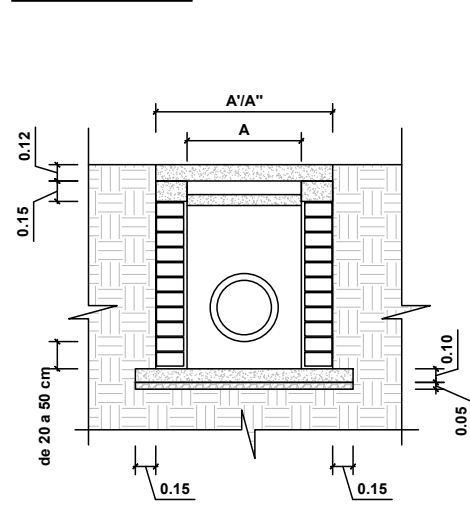
VISTA SUPERIOR:



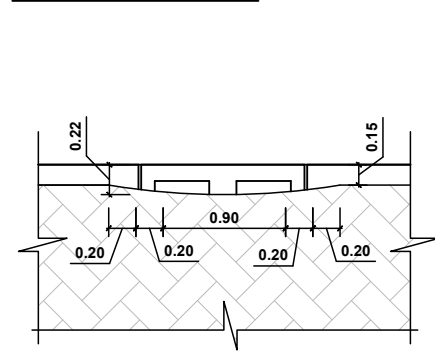
CORTE A-A':



CORTE B-B':

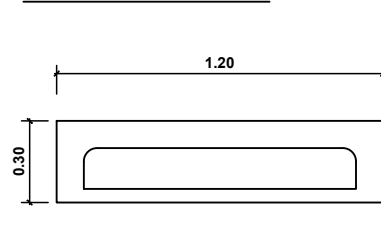


VISTA FRONTAL:

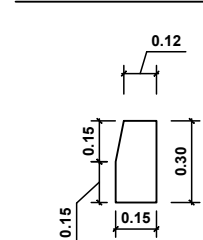


DETALHE MEIO-FIO BOCA DE LOBO:

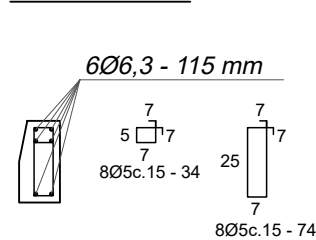
VISTA FRONTAL:



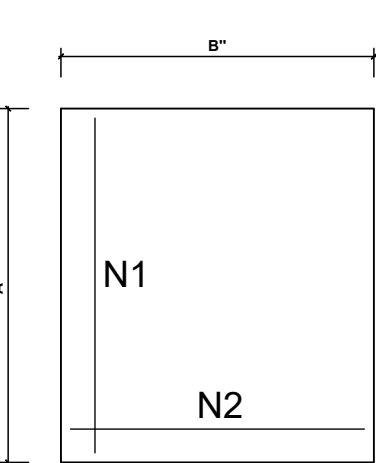
VISTA LATERAL:



CORTE A-A':



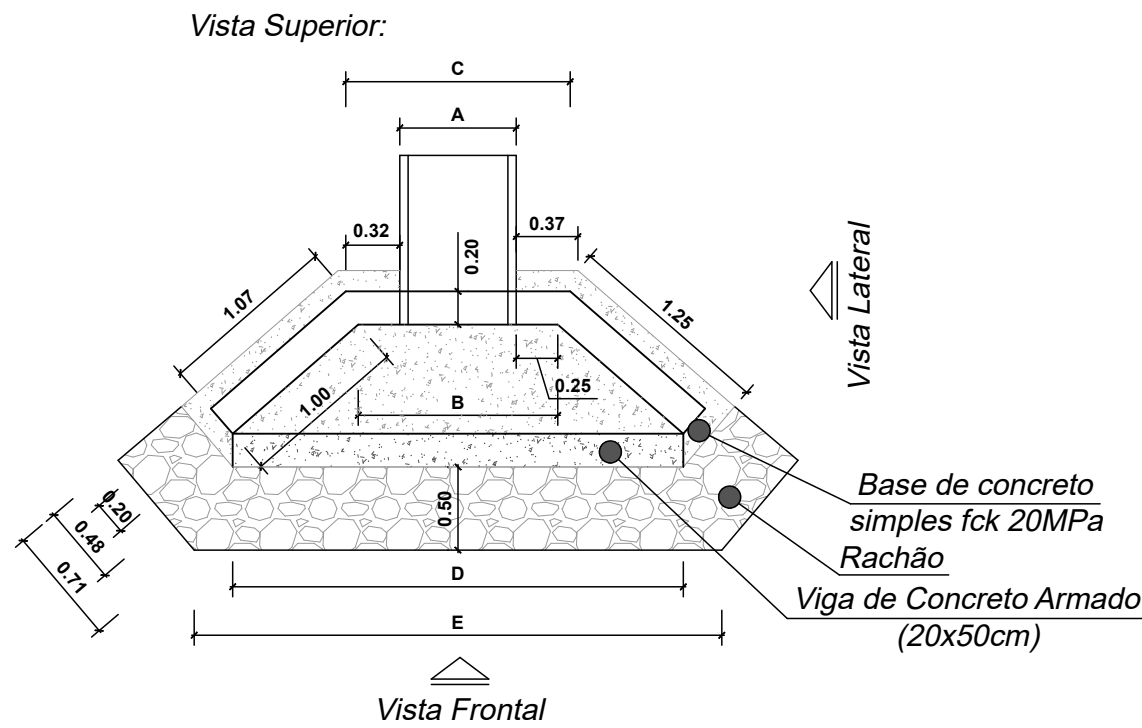
TAMPAS DE CONCRETO ARMADO:



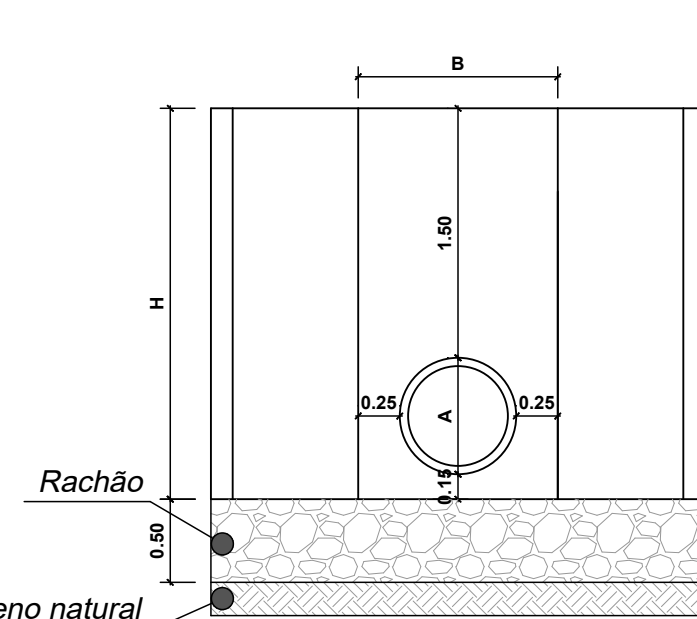
h = 12cm
cobrimento 3,5 cm
concreto Fck 25 MPa
aço CA-50

DETALHAMENTO ALAS DE ALVENARIA DE TIJOLOS MACIÇOS:

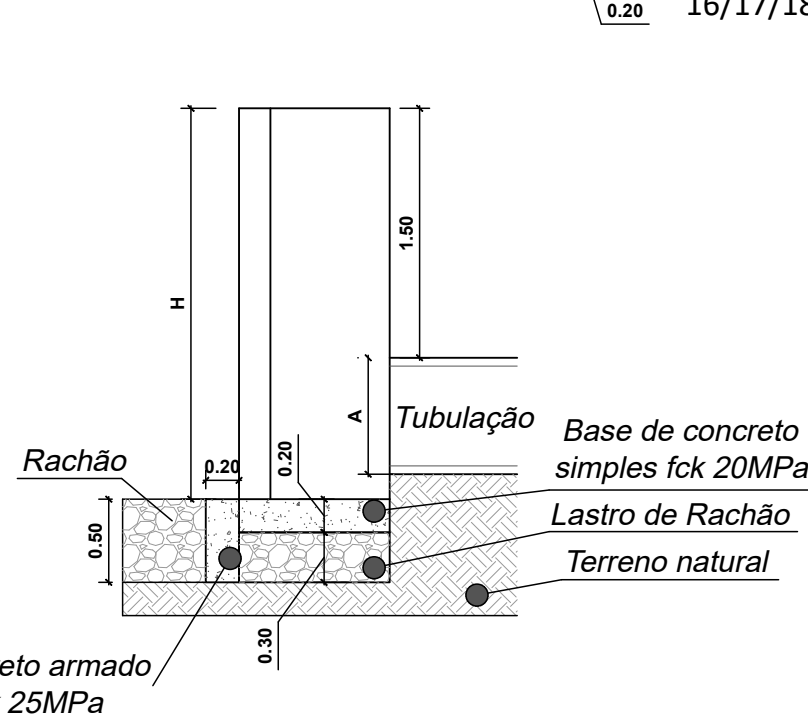
Alas tipo A1, A2 e A3:



Vista Frontal:



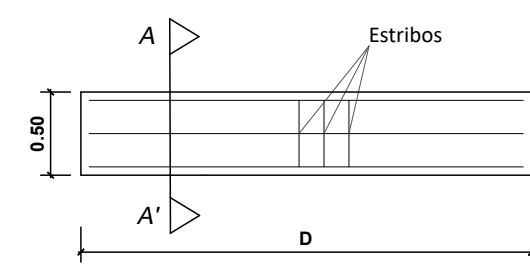
Vista Lateral:



Viga da Ala (20x50cm)

N1 (A1) ou N2 (A2) ou N3 (A3) - 2Ø12,5
240 (A1) / 260 (A2) / 280 (A3)

N1 (A1) ou N2 (A2) ou N3 (A3) - 2Ø12,5
240 (A1) / 260 (A2) / 280 (A3)



N1 (A1) ou N2 (A2) ou N3 (A3) - 2Ø12,5
240 (A1) / 260 (A2) / 280 (A3)

Corte AA'

N1/N2/N3

7 7
40 10
cobrimento 5,0 cm
concreto Fck 25 MPa
aço CA-50
16/17/18 φ 5 c. 15 - 110

PREFEITURA MUNICIPAL DO RIO GRANDE

GABINETE DE PROGRAMAS E PROJETOS ESPECIAIS



TRAVESSA 6
PROJETO DE INFRAESTRUTURA
VILA DA QUINTA

PROJETO DE PAVIMENTAÇÃO E DRENAGEM
PLANTA DE DETALHES

GPPE
03.2024

ENGª. BÁRBARA LOTHAMER PEIXE
CREA RS202828

GILBERTO ARABIDIAN JUNIOR
CHEFE DE GABINETE DE PROGRAMAS E PROJETOS ESPECIAIS

05/05

ESCALA INDICADA

DIMENSÕES E ARMADURAS - CAIXAS COM BOCA DE LOBO									
Nome	DN φ	Dimensões internas (cm)		Dimensões externas (cm)		Dimensões tampa (cm)		Armaduras tampa	
	(cm)	A	B	A'	B'	A''	B''	N1	N2
BL1	40	90	90	130	130	130	115	7φ6,3c.15 - 123	8φ6,3c.15 - 108

DIMENSÕES - ALAS DE ALVENARIA E DE CONCRETO ARMADO								
Nome	DN φ	A	B	C	D	E	F	H
	(cm)	(cm)	(cm)	(cm)	(cm)	(cm)	(cm)	(cm)
Ala de alvenaria - A1	40	50	100	115	250	296	-	215